

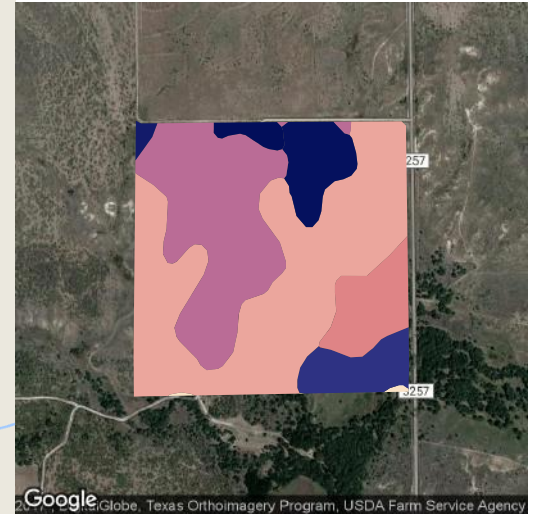
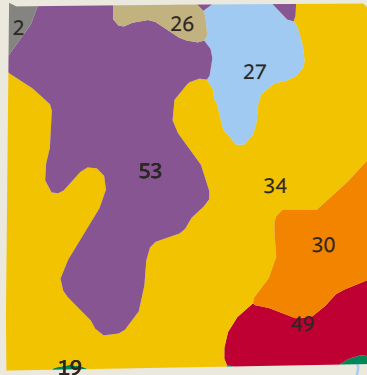
2 fields, 158 acres in Donley County, TX

AVG NCCPI

29.9

COUNTY AVG

35.1



QUALITY 21 45

Google

Map data ©2017 Google

Source: NRCS Soil Survey

All fields

158 ac

SOIL CODE	SOIL DESCRIPTION	ACRES	PERCENTAGE OF FIELD	SOIL CLASS	NCCPI	
34	Mobeetie-Veal-Potter complex, 3 to 20 percent slopes	73.99	46.9%	6	25.1	
53	Veal fine sandy loam, 3 to 5 percent slopes, cool	45.86	29.1%	4	31.5	
30	Mobeetie fine sandy loam, 3 to 5 percent slopes, cool	12.72	8.1%	4	27.2	
27	Miles fine sandy loam, 3 to 5 percent slopes	11.13	7.1%	3	44.4	
49	Spur clay loam, 0 to 1 percent slopes, occasionally flooded, cool	9.82	6.2%	2	40.3	
26	Miles fine sandy loam, 1 to 3 percent slopes	2.83	1.8%	3	44.7	
2	Acuff loam, 1 to 3 percent slopes	1.10	0.7%	3	43.1	
19	Guadalupe fine sandy loam, 0 to 2 percent slopes, occasionally flooded	0.24	0.2%	3	21.8	
					157.69	29.9

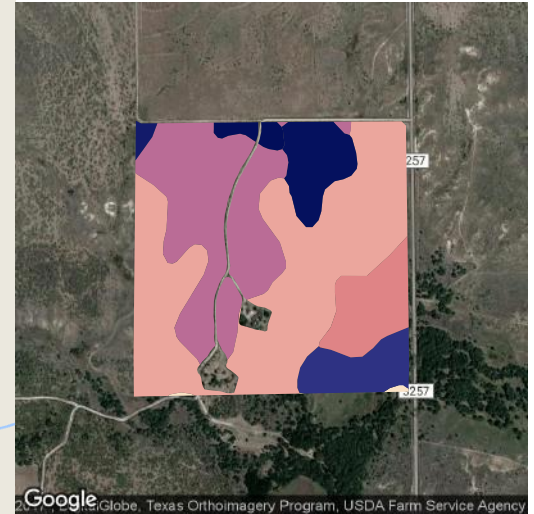
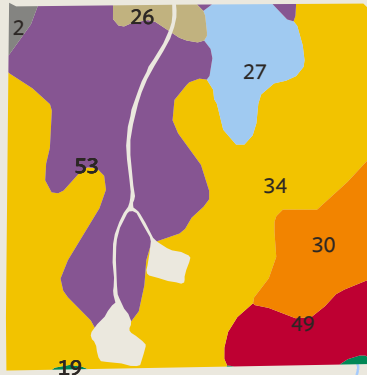
2 fields, 158 acres in Donley County, TX

AVG NCCPI

30.0

COUNTY AVG

35.1



QUALITY 21 45

Google

Map data ©2017 Google

Field 1

Source: NRCS Soil Survey

152 ac

SOIL CODE	SOIL DESCRIPTION	ACRES	PERCENTAGE OF FIELD	SOIL CLASS	NCCPI	
34	Mobeetie-Veal-Potter complex, 3 to 20 percent slopes	70.77	46.6%	6	25.1	
53	Veal fine sandy loam, 3 to 5 percent slopes, cool	43.49	28.6%	4	31.5	
30	Mobeetie fine sandy loam, 3 to 5 percent slopes, cool	12.72	8.4%	4	27.2	
27	Miles fine sandy loam, 3 to 5 percent slopes	11.13	7.3%	3	44.4	
49	Spur clay loam, 0 to 1 percent slopes, occasionally flooded, cool	9.82	6.5%	2	40.3	
26	Miles fine sandy loam, 1 to 3 percent slopes	2.72	1.8%	3	44.7	
2	Acuff loam, 1 to 3 percent slopes	1.10	0.7%	3	43.1	
19	Guadalupe fine sandy loam, 0 to 2 percent slopes, occasionally flooded	0.24	0.2%	3	21.8	
					152.00	30.0

2 fields, 158 acres in Donley County, TX

AVG NCCPI

28.1

COUNTY AVG

35.1



Google

Map data ©2017 Google

QUALITY 21 45

Field 2

Source: NRCS Soil Survey

6 ac

SOIL CODE	SOIL DESCRIPTION	ACRES	PERCENTAGE OF FIELD	SOIL CLASS	NCCPI
■ 34	Mobeetie-Veal-Potter complex, 3 to 20 percent slopes	3.22	56.6%	6	25.1
■ 53	Veal fine sandy loam, 3 to 5 percent slopes, cool	2.37	41.6%	4	31.5
■ 26	Miles fine sandy loam, 1 to 3 percent slopes	0.10	1.8%	3	44.7
		5.69			28.1

2 fields, 158 acres in Donley County, TX



All fields

158 ac



	2016	2015	2014	2013	2012
Non-Cropland	62.9%	73.2%	60.2%	59.1%	63.2%
Grass/Pasture	37.1%	26.1%	39.8%	40.9%	36.0%
Other	-	0.7%	-	-	0.8%



Field 1

152 ac



	2016	2015	2014	2013	2012
Non-Cropland	63.1%	72.8%	59.8%	58.5%	63.3%
Grass/Pasture	36.9%	26.5%	40.2%	41.5%	35.9%
Other	-	0.7%	-	-	0.9%



Field 2

6 ac





	2016	2015	2014	2013	2012
Non-Cropland	55.9%	83.9%	70.8%	75.2%	60.3%
Grass/Pasture	44.1%	14.6%	29.2%	24.8%	39.7%
Other	-	1.4%	-	-	-

Source: NASS Cropland Data Layer

2 fields, 158 acres in Donley County, TX

Donley County, TX

FIELD	ACRES	LOCATION	OWNER (LAST UPDATED)
1 	152.00		N/A
2 	5.69		N/A

157.69

